



Installing and Configuring the JetSet client for Global Roaming

For more information about our connectivity
Call: 01865 856000
Email: info@community.net.uk
Visit: www.community.net.uk
www.redkite.net





Introduction

This document will help you configure your new JetSet client for connection to global roaming services.

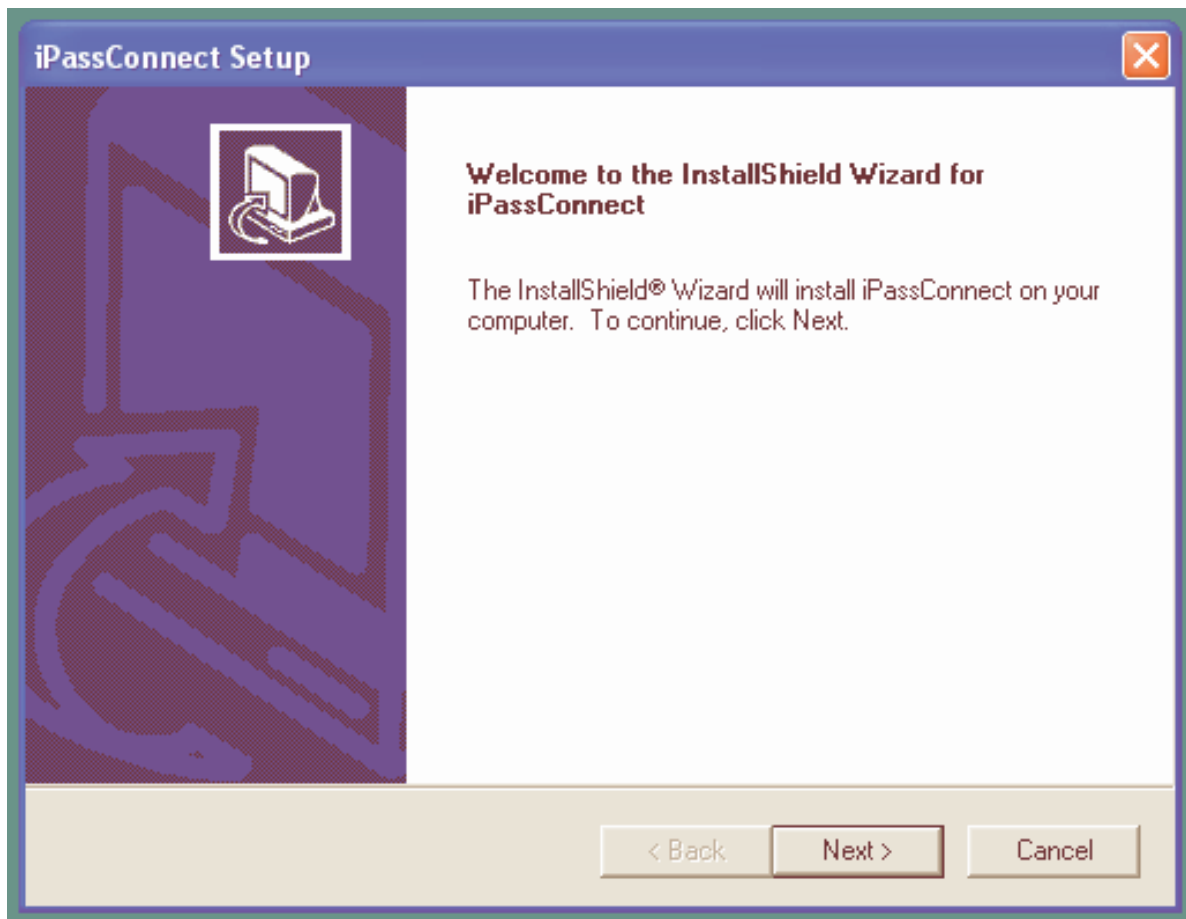
Contents

Installing the Software	3
Entering your User Details	4
Selecting a Connection Method	6
Making a Connection	9
Updating the Phonebook	11

Installing the Software

Download the client software from the Jetset website.

Follow the installation through and restart your computer when asked.



When fully installed, run the client software.

Entering your User Details

Begin by setting up your user details.

Click:

- 'Settings'
- 'Login Information'



On the following screen, enter the username and password supplied to you.

Take care when entering these fields as both username and password are case sensitive.



Tick the box to 'Save Password' and click 'OK' to save your details.

Selecting a Connection Method

To connect to the internet you must instruct the JetSet client as to which connection method you wish to use.

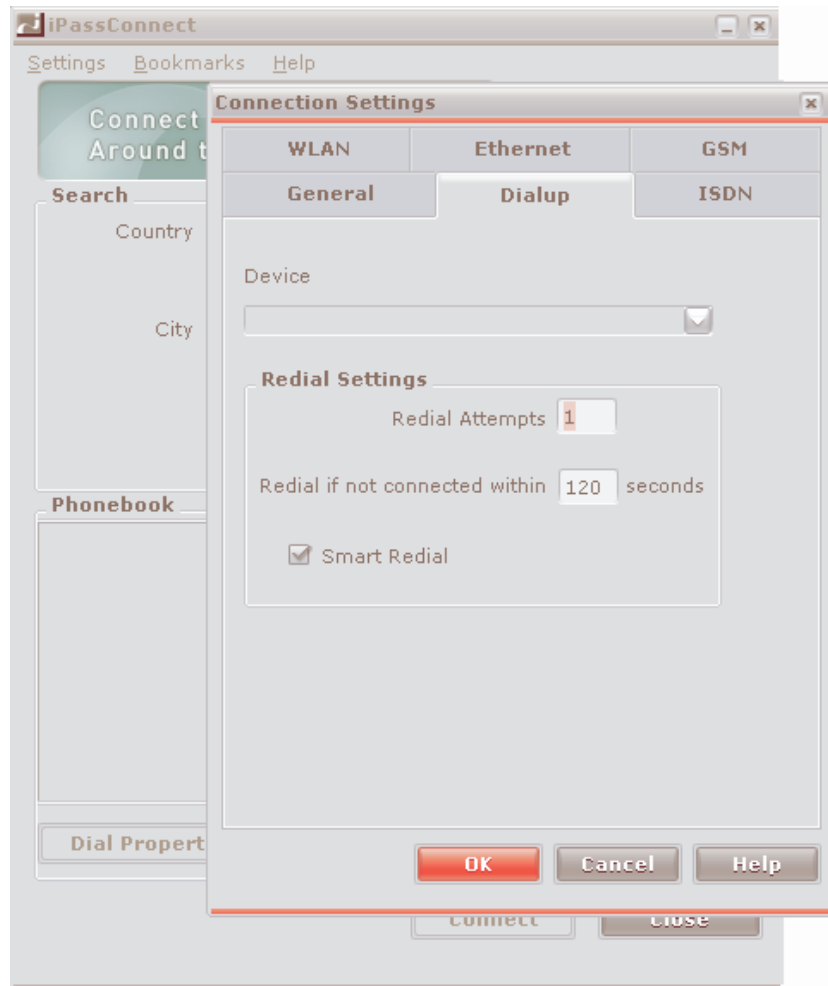
Click

- 'Settings'
- 'Connection Settings'



To create a dial-up connection click on the 'Dialup' tab.

In the device drop down list select the analogue modem on your computer that will make the dial-up connection.

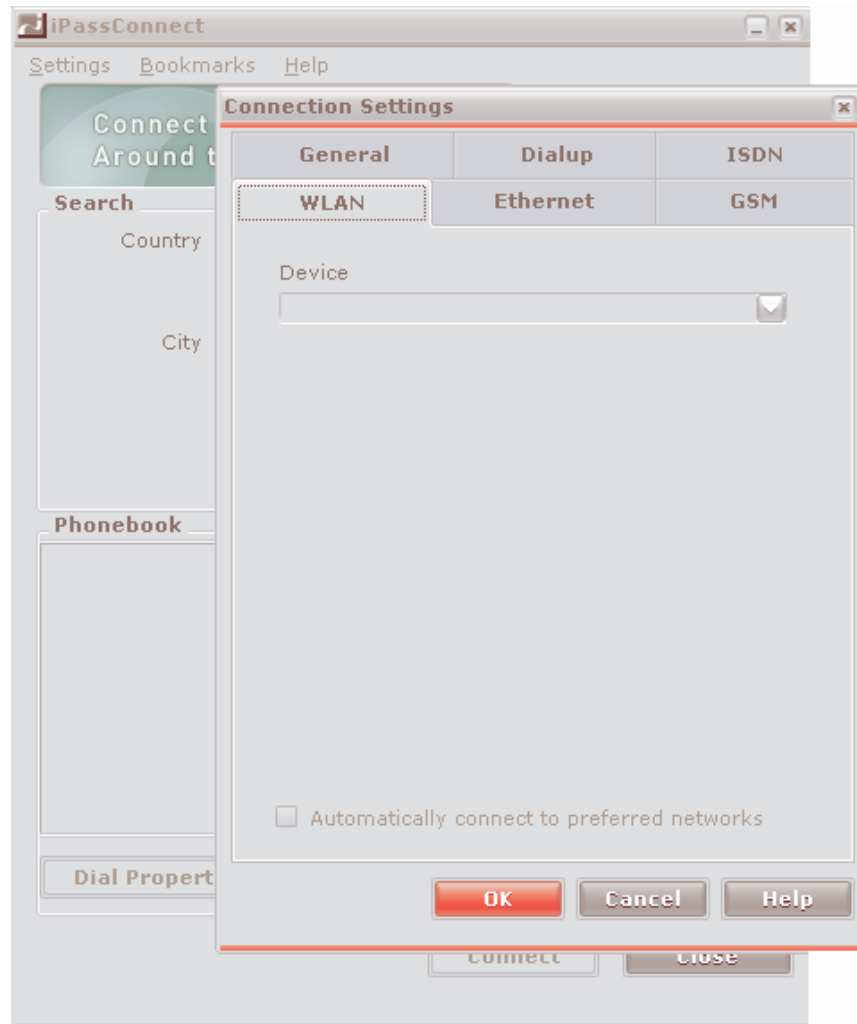


Click 'OK' to save your settings.

To create a wireless connection click on the 'Wireless' tab.

In the device drop down list select the wireless device on your computer that will make the wireless connection.

Enter the remaining details as required.



Click 'OK' to save your settings.

Making a Connection

To make a connection go to the main menu.

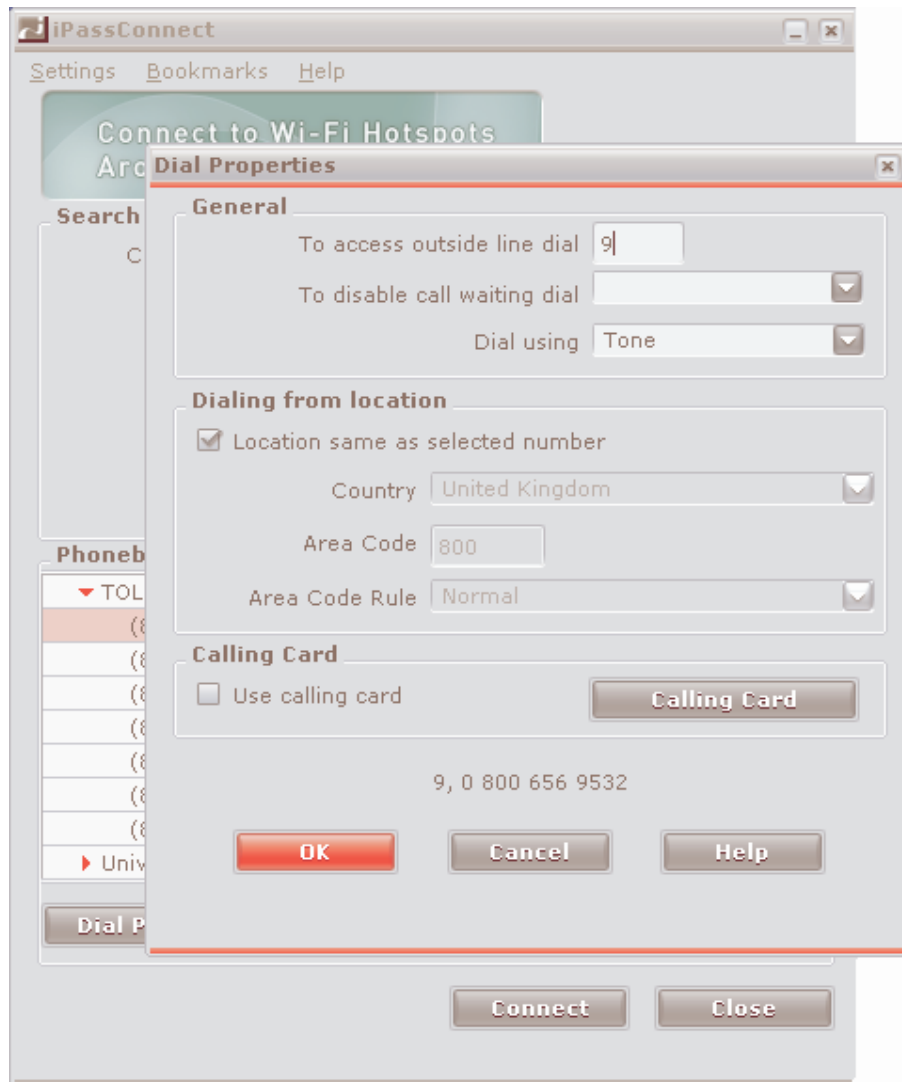
Select your current location by defining 'Country' and 'City'

Next, click 'Find'.



Next, select a connection from the 'Phonebook'.

To modify the details for your individual connection, such as dialling for an outside line, click the 'Dial Properties' button.



When you have finished, click 'OK' to save your settings.

Updating the Phonebook

Be sure to keep your JetSet client up to date with the very latest connections by updating the phonebook.

To do this click

- 'Settings'
- 'Update iPass Connect'
- 'Update Phonebook'

